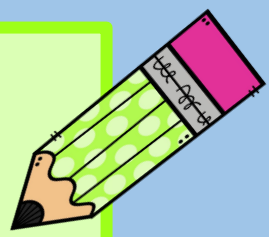


# K-2 TEAM NEWSLETTER

September 4, 2020



## A NOTE FROM YOUR TEACHERS

Dear Learning Coaches,

You made it through another week! Thank you all for being patient as we have worked together to navigate tech issues and problems with the OLS.

Please make sure to check out the Pacing Guide on page 2 of the newsletter. This is where you can always look to see where your student should be as of the day the newsletter is sent (Fridays).

New families, please make sure to check out and bookmark our K-2 Team website. There is LOTS of great information to be found about our team and helpful items to navigate starting your time at CASC.

Have a fantastic LONG weekend!  
Sincerely,  
Your K-2 Team Teachers



## WEEKLY REMINDERS

- Please make sure that you complete all assignments on your daily plan.
- Attending live classes is mandatory and counts toward your final grade.
- Music, Art, and PE are optional courses. If you have questions please email your advisor.
- Use Firefox web browser for optimum OLS access.



## KINDERGARTEN FRIENDS

Please make sure to see the last page of the newsletter about the Kindergarten Readiness Assessment (KRA). This is ONLY for those in Kindergarten.

Mrs. Farior, Mrs. Rohrbaugh, Mrs. Green & Mrs. James will be giving these tests and will NOT be holding live Class Connects from October 1-12. Students will still complete work in the OLS as usual.

## WELCOME NEW FAMILIES!

-----  
Music, Art and P.E. are optional courses, if you would like them removed from your student's plan, please contact your advisor or homeroom teacher.



# IMPORTANT DATES



- Mon 9/7 Labor Day - No School
- Fri 9/17 Virtual Outing - Picnic (see next page)
- Fri 9/25 Virtual Open House

Click the link below for the 2020-2021 CASC Academic Calendar



<https://bit.ly/CASCcalendar>

## WEEKLY PACING GUIDE

The guide below shows where you should be **TODAY, FRIDAY** in the OLS. Only the main courses are listed. If you have questions about your OLS progress, please email your teachers or advisor.

### Kindergarten

- Phonics - Lesson 3.4
- Language Skills - Lesson 2.4
- Lit. and Comp.- Lesson 2.4
- Math - Lesson 1.11

### 1st Grade

- Phonics - Lesson 3.4
- Literature - Lesson 2.7
- Math - Lesson 1.14

### 2nd Grade

- Writing - Lesson 3.4
- Literature Lesson 3.3
- Math - Lesson 1.10



## TEACHER CONTACTS

Email is the best way to contact any teacher or advisor.

**Ms. Allison Pujols - K2 Advisor**  
[apujols@cyberacademysc.org](mailto:apujols@cyberacademysc.org)

**Mrs. Carrie Rohrbaugh - K5 ELA**  
[crrohrbaugh@cyberacademysc.org](mailto:crrohrbaugh@cyberacademysc.org)

**Mrs. Brittany Fariior - K5 Math**  
[bfariior@cyberacademysc.org](mailto:bfariior@cyberacademysc.org)

**Mrs. Amy Mattox - 1st ELA**  
[amattox@cyberacademysc.org](mailto:amattox@cyberacademysc.org)

**Mrs. Tandy Green - 1st Math**  
[tgreen@cyberacademysc.org](mailto:tgreen@cyberacademysc.org)

**Mrs. Krista James - 2nd ELA**  
[kjames@cyberacademysc.org](mailto:kjames@cyberacademysc.org)

**Mrs. Christine Reissener**  
[creissener@cyberacademysc.org](mailto:creissener@cyberacademysc.org)

**Mrs. Jessica Pinyan - 2nd Math**  
[jpinyan@cyberacademysc.org](mailto:jpinyan@cyberacademysc.org)

### CASC School Website

[Cyber Academy of South Carolina](#)

### Strong Start Website

[Strong Start for Enrolled Families](#)

### K-2 Website

[K-2 Team Website - Home](#)

### Cyber Academy Virtual Media Center

[Media Center](#)

### Big Universe

[Big Universe Literacy Site](#)

### Discus

[South Carolina DISCUS site](#)

username: discuss19  
password: study

### PTSO Website

[Cyber Academy PTSO](#)



Helpful Links to Bookmark

# PLEASE MAKE SURE TO CHECK OUT EMAILS & NOTIFICATIONS THAT ARE SENT FROM CASC PARENT SQUARE.

There are lots of great opportunities for students and learning coaches, like the ones below!  
<https://www.smore.com/a9xsy>

## Grades 3-5 Lunch Time Recess Show and Tell Social

9/17/2020 – 12:00 p.m. to 12:30 p.m.

### Open Chat and White Board

Bring your lunch and hangout  
Bring a show and tell item to  
start a group discussion.  
Use this time to chat and  
make new friends.



*Looking for a bit more support, have a question?*  
Please join New Learning Coach Orientation  
9/17/2020  
*Thursday* at 3:00 p.m. to 3:45 p.m.  
Please [RSVP HERE](#) to Receive Link

More details on the Lunch Time Recess Picnic and Learning Coach Orientation can be found here <https://www.smore.com/a9xsy>

## What is the KRA?

The KRA is a developmentally appropriate instrument that measures a child's school readiness across multiple domains. Understanding a child's school readiness helps kindergarten teachers best meet the child's needs, and it helps schools, families, communities and policy makers know how best to support young children as they enter the K-12 environment

The KRA determines each child's readiness level from an evaluation of four domains: Social Foundations, Language/Literacy, Mathematics, and Physical Well-Being. The KRA provides a snapshot of students' abilities at the beginning of the school year

### Testing Dates:

- Between Oct. 1-12
- You should have received an e-mail with testing dates and locations as well as a link to a **Parent Survey** for you to fill out. Please complete the survey as soon as possible.

## Kindergarten Readiness Assessment (KRA) Information

### (Kindergarten Students Only)

Mrs. Farior, Mrs. Rohrbaugh, Mrs. Green & Mrs. James will be giving these tests and will NOT be holding live Class Connects from October 1-12. Students will still complete work in the OLS as usual.